

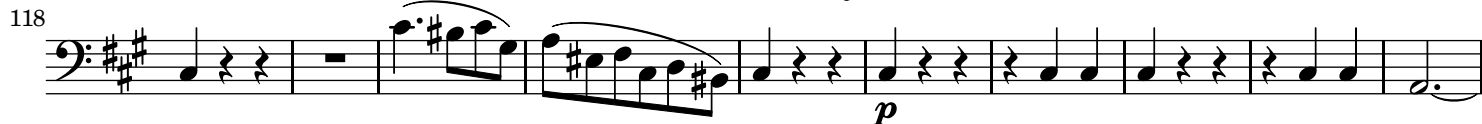
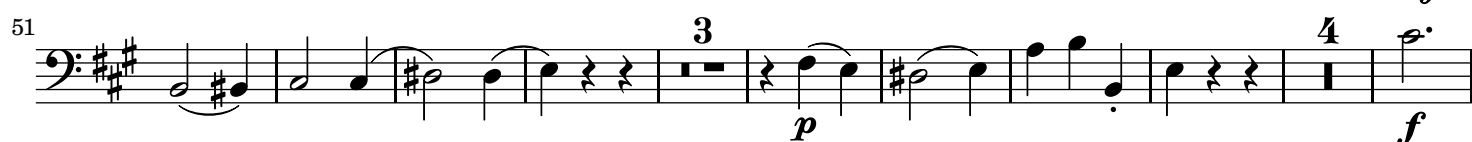
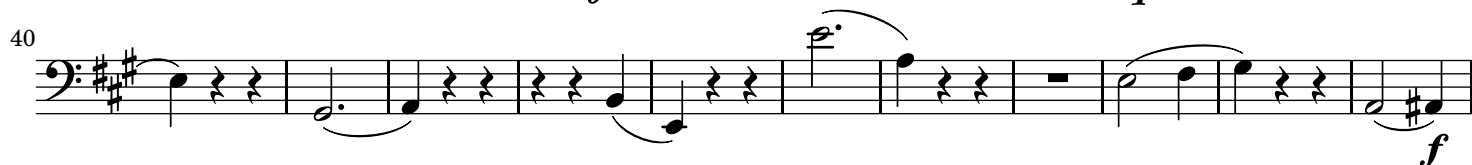
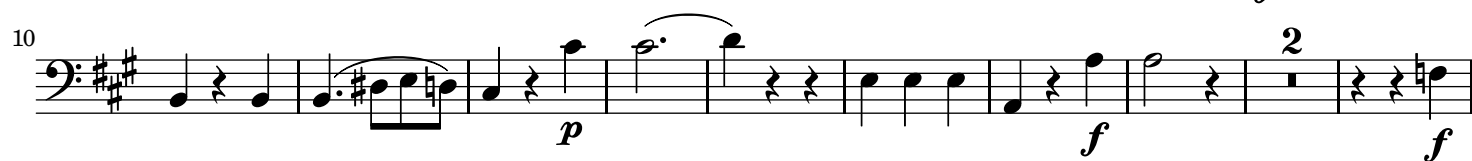
String Quartet KV. 464 (nr. 18)

for 2 violins, viola and cello

Cello.

W. A. Mozart (1756-1791)

Allegro.



139 *p*

148 *cresc.* *f* *fp* *fp* *fp*

160 *f* *p* *f* *p* *f*

171 *p* *f* 3

183 *p* *cresc.*

193 *f* *p*

204 *f* *p*

216 3 4 *f* 4 *p*

235 *f*

243 *p*

252 *f* *p* *cresc.* *f* *p*

262 *f*

Minuetto.

6 3 *f* *p* *f* *p* *f* *p*

18 *f* *p* 2

29 *p*

40 *f* 7 *f* 2

57 *p* *f* 2 *p*

69 *Trio.*

78

88 *(f)* *(decresc)* *p*

98 3 3 3 3 3 M.D.C.

Andante. 2/4

p *sf* *p*

9 *f* *p cresc.* *f*

18 *p* *f*

27 *f* *p* *cresc.* *f* *p* *f* *p* *f* *p*

36 *p* *fp* *fp* *f*

44 *p* *fp* *fp* *f* *p*

52 *f* *p* *p*

61 *fp* *p* *cresc.*

70 *fp* *p* 3 3 3

76 *f* *p*

82 *f* 3 3 3 *p*

90 *f* 3 3 3 *p*

104 *p* *f*

113 *(f)*

122 *p* *p*

129

Cello.

5

140

p *f* *p*

155

cresc. *f* *p*

164

f *p cresc.* *f*

174

p *f*

181

p

Allegro. 2 *p* 2

11

f

21

29

sf sf sf sf sf sf

37

p sf f p

46

f 4

59

2 *p f p*

70

80

88

98

106

113

124

136

144

155

163

171

179

This musical score for Cello spans measures 70 to 179. The key signature is D major (two sharps). The score is written in a single system with ten staves. Measure numbers are placed at the beginning of each staff. The notation includes various note values, rests, and dynamic markings. Slurs and phrasing marks are used to indicate musical phrases. The score concludes with a double bar line at the end of measure 179.

f

p

f

p

f

p

cresc.

f

p

(f)

p

p

f

sf

p

sf

f

p

sf

sf

sf

sf

Cello.

7

188

201

213

222

231

239

245

253

f

p

fp

f

p

f

p

pp