



Martin Staub

Arranger, Composer, Director, Interpreter, Teacher

United States (USA), Millsboro

About the artist

Martin is a retired music teacher, composer (member of ASCAP) and church musician (member of AGO). His compositions are mostly sacred music, solo piano, brass, and organ. He has been a professional musician nearly all his life and is still an active composer, performer, teacher, organist and choir director. Currently he is the music director of Grace Lutheran Church, LaPlata, MD and is a member of the Rehoboth, DE Concert Band where he plays euphonium. He and his wife have been married for 49 years and have two children and 4 grandchildren.

Qualification: 4 to 6

Associate: ASCAP

Artist page : www.free-scores.com/Download-PDF-Sheet-Music-martin-staub.htm

About the piece



Title: Flow Gently, Sweet Afton

Arranger: Staub, Martin

Licence: Copyright © Martin Staub

Instrumentation: Handbells

Style: Classical

Martin Staub on free-scores.com



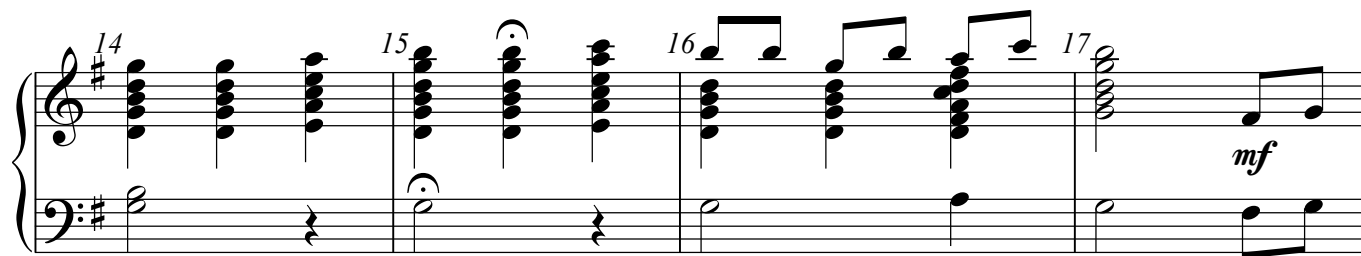
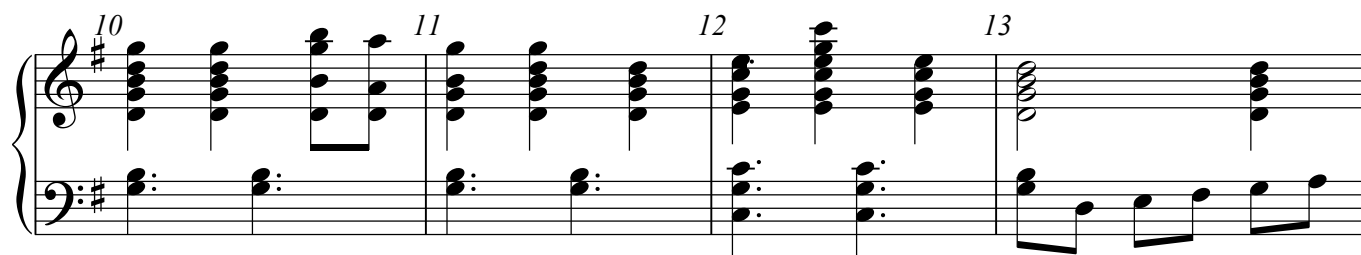
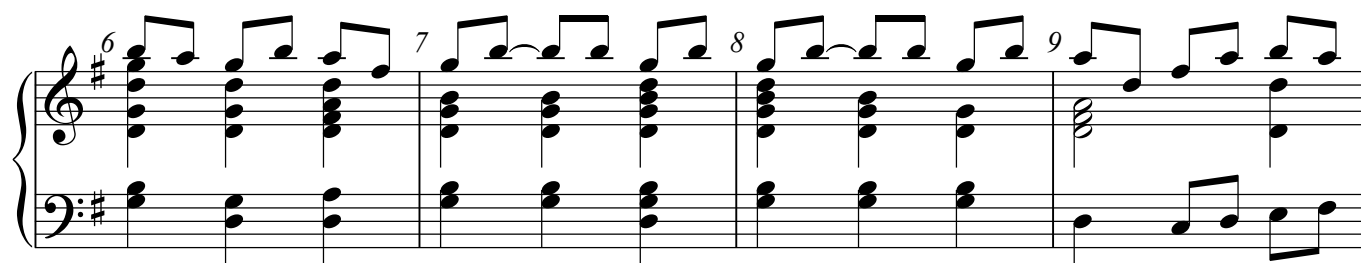
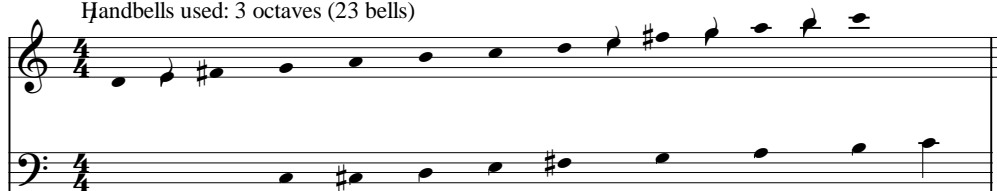
- listen to the audio
- share your interpretation
- comment
- contact the artist

To the Chimes of St. John's Lutheran School, Dover, DE, Marcia Schaefer, Director

Flow Gently, Sweet Afton

English Folk Song
Arr. Martin Staub (ASCAP)

Handbells used: 3 octaves (23 bells)



22 23 24 25

cresc. *mp*

26 27 28 29

30 31 32

rit. *cresc.* *- A tempo*

33 34 35

f

36 37 38 39

40 41 42 43

Measures 44-47 of a musical score in G major (one sharp). The score is written for piano with treble and bass staves. Measure 44 features a treble staff with a half note chord (G4, B4, D5) and a bass staff with a half note chord (G2, B1, D2). Measure 45 has a treble staff with a half note chord (G4, B4, D5) and a bass staff with a half note chord (G2, B1, D2). Measure 46 has a treble staff with a half note chord (G4, B4, D5) and a bass staff with a half note chord (G2, B1, D2). Measure 47 has a treble staff with a half note chord (G4, B4, D5) and a bass staff with a half note chord (G2, B1, D2). Dynamics include *pp* (pianissimo) and *f* (forte).

Measures 48-51 of a musical score in G major (one sharp). The score is written for piano with treble and bass staves. Measure 48 features a treble staff with a half note chord (G4, B4, D5) and a bass staff with a half note chord (G2, B1, D2). Measure 49 has a treble staff with a half note chord (G4, B4, D5) and a bass staff with a half note chord (G2, B1, D2). Measure 50 has a treble staff with a half note chord (G4, B4, D5) and a bass staff with a half note chord (G2, B1, D2). Measure 51 has a treble staff with a half note chord (G4, B4, D5) and a bass staff with a half note chord (G2, B1, D2). Dynamics include *ff* (fortissimo), *pp* (pianissimo), and *mp* (mezzo-piano).

Measures 52-55 of a musical score in G major (one sharp). The score is written for piano with treble and bass staves. Measure 52 features a treble staff with a half note chord (G4, B4, D5) and a bass staff with a half note chord (G2, B1, D2). Measure 53 has a treble staff with a half note chord (G4, B4, D5) and a bass staff with a half note chord (G2, B1, D2). Measure 54 has a treble staff with a half note chord (G4, B4, D5) and a bass staff with a half note chord (G2, B1, D2). Measure 55 has a treble staff with a half note chord (G4, B4, D5) and a bass staff with a half note chord (G2, B1, D2).

Measures 56-59 of a musical score in G major (one sharp). The score is written for piano with treble and bass staves. Measure 56 features a treble staff with a half note chord (G4, B4, D5) and a bass staff with a half note chord (G2, B1, D2). Measure 57 has a treble staff with a half note chord (G4, B4, D5) and a bass staff with a half note chord (G2, B1, D2). Measure 58 has a treble staff with a half note chord (G4, B4, D5) and a bass staff with a half note chord (G2, B1, D2). Measure 59 has a treble staff with a half note chord (G4, B4, D5) and a bass staff with a half note chord (G2, B1, D2).

Measures 60-63 of a musical score in G major (one sharp). The score is written for piano with treble and bass staves. Measure 60 features a treble staff with a half note chord (G4, B4, D5) and a bass staff with a half note chord (G2, B1, D2). Measure 61 has a treble staff with a half note chord (G4, B4, D5) and a bass staff with a half note chord (G2, B1, D2). Measure 62 has a treble staff with a half note chord (G4, B4, D5) and a bass staff with a half note chord (G2, B1, D2). Measure 63 has a treble staff with a half note chord (G4, B4, D5) and a bass staff with a half note chord (G2, B1, D2). Dynamics include *f* (forte).

4 rit. A tempo

rit. dim.